

CERTIFICATE OF LOCATION OF GOVERNMENT CORNER

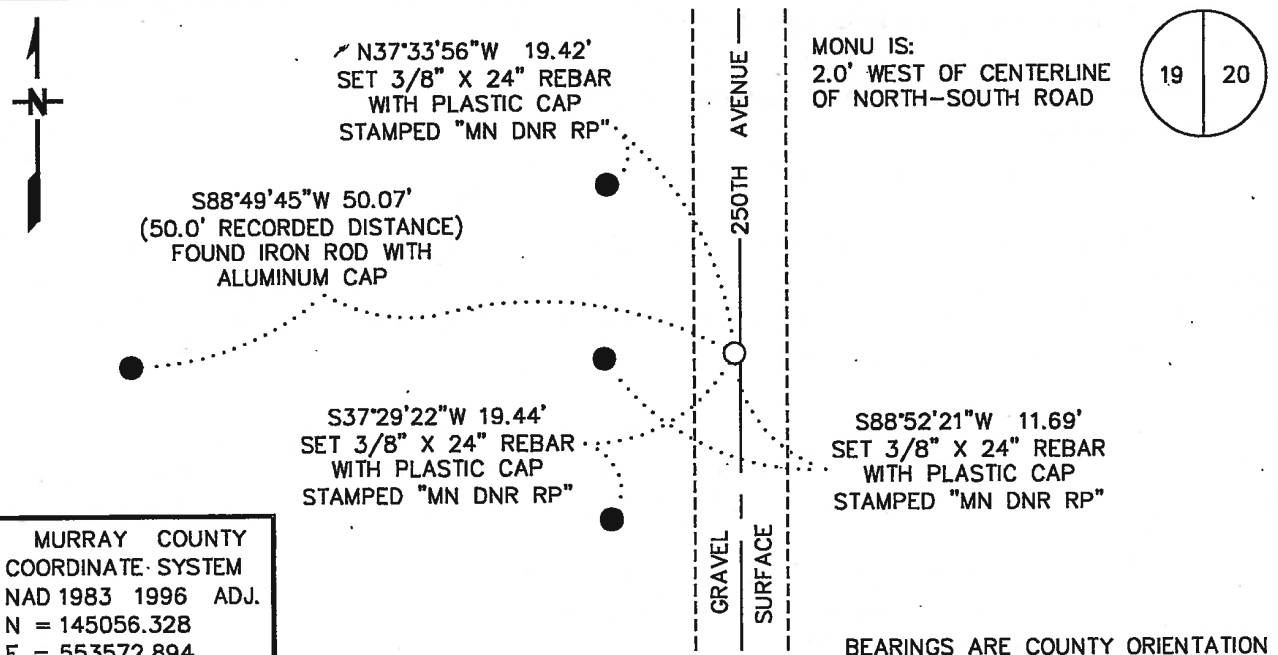
EAST QUARTER Corner of Section 19, Township 106 N, Range 39 W
5TH Principal Meridian, State of Minnesota, County of MURRAY

At the corner location shown on the sketch:

■ On 11/2/16 found a RAILROAD SPIKE, DOWN 0.5'
DATE

left monument as found, lowered monument, removed monument (explain)

■ On 11/2/16 Placed a 3/4" X 24" REBAR WITH PLASTIC CAP STAMPED
DATE
"MN DNR LS 17003", DOWN 0.5', IN PLACE OF FOUND RAILROAD SPIKE



Statement of evidence for this corner location is on back of this page.

FEBRUARY 2017
WMA00384

I hereby certify that this plan, specification, or report was prepared by me or under my direct supervision and that I am a duly Licensed Land Surveyor under the laws of the State of Minnesota.

SIGNATURE Bruce W. Shepperd DATE 3/23/17 License Number 17003
BRUCE W. SHEPPERD

The DNR Division of Lands and Minerals contacted the following for survey information:

Website - mngeo.state.mn.us

Website - murray-countymn.com

Murray County Recorder's Office

Bueltel-Moseng Land Surveying, Inc. of Marshall

Zieske Land Surveying Inc. of Windom

Madsen Land Surveying Inc. of Fairmont

United States Department of the Interior Fish and Wildlife Service

- 1861 U.S. General Land Office notes, obtained from mngeo.state.mn.us, show the corner marked with a post and a charred stake in a raised mound with trench and pits as per instructions.
- 1908 Plat Book for Des Moines River Township, obtained from the County Recorder's Office, shows a north-south and property division east in the area of the corner.
- 1926 Plat Book for Des Moines River Township, obtained from the County Recorder's Office; shows a north-south and property divisions east and west in the area of the corner.
- 1961 January, field notes and map for a survey in the NW $\frac{1}{4}$ of Section 20, T106N, R39W, by the Department of Conservation, in the possession of the DNR Division of Lands and Minerals, states that a railroad spike was placed at the corner at the intersection of a north-south road and fences east and west. The following ties are shown to the corner:
- bottle cap in telephone pole, east, 42.75 feet
 - spike in top of fence post, west, 34.19 feet
 - top of second steel fence post, southeast, 63.48 feet
- The corner is shown:
2674.1 feet from the northeast corner of Section 19
- 1965 February, field notes and map for a survey in the SW $\frac{1}{4}$ of Section 20, T106N, R39W, by the Department of Conservation, in the possession of the DNR Division of Lands and Minerals, states that the railroad spike from the 1961 survey was found at the corner. The corner is shown:
2674.1 feet from the northeast corner of Section 19
- 2012 January 11, a Certificate of Survey in the S $\frac{1}{2}$ of Section 19, T106N, R39W, by Gary L. Kratz, Regional Land Surveyor for the U.S. Fish and Wildlife Service, obtained from the United States Department of the Interior Fish and Wildlife Service states that a railroad spike was found at the corner. The corner is shown:
- 2674.70 feet from the northeast corner of Section 19
 - 2679.33 feet from the northeast corner of Section 30
 - 50.00 feet east of a set US FWS Alum. Post with cap

East Quarter Corner of Section 19, Township 106 North, Range 39 West
Page 2 of 2

- 2016 November 2, the DNR Division of Lands and Minerals found a railroad spike, down 0.5 of a foot, at the corner. Then an 8 foot north-south by 6 foot east-west by 3 foot deep hole was dug with a backhoe, the center being the found the found railroad spike, but only found barb wire and a wood corner fence post lying horizontally- unable to find where it was set in the ground. No other monuments were found in the excavation and no other metal attractions were obtained. A search was made for the record ties but found no evidence of them. The railroad spike was found to be:
- a) 2.0 feet west of the center line of a north-south road
 - b) 2674.65 feet from a rebar found in the area of the northeast corner of Section 19
 - c) 2679.25 feet from a rebar found in the area of the southeast corner of Section 19
 - d) 9.95 feet west of a straight line from the rebar found in the area of the northeast corner of Section 19 to the rebar found in the area of the southeast corner of Section 19

Analysis of the above information led the DNR Division of Lands and Minerals to conclude that the found railroad spike marks the obliterated location of the corner. A $\frac{3}{4}$ inch by 24 inch rebar with a plastic cap stamped "MN DNR LS 17003" was set in place of the found railroad spike and ties were taken to it as shown on the sketch of reference ties. The found railroad spike was discarded.